

Examples

Lecture 8

Robb T. Koether

Hampden-Sydney College

Fri, Jan 31, 2014

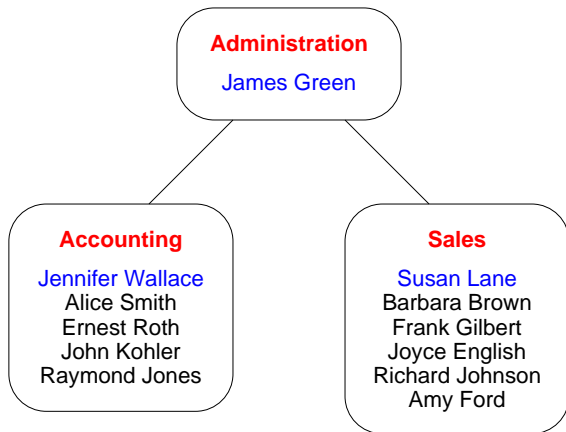
1 The company Database

2 Practice Problems

The company Database

- The practice problems in this lecture will use the company database with the following tables.
 - employees
 - dependents
 - departments
 - projects
 - works

The company Database



Employees by Department

The company Database

Payroll

Alice Smith
John Kohler
Raymond Jones

Investment

Jennifer Wallace
Ernest Roth
Raymond Jones

Clothing

Barbara Brown
Frank Gilbert
Joyce English
Amy Ford

Office Supplies

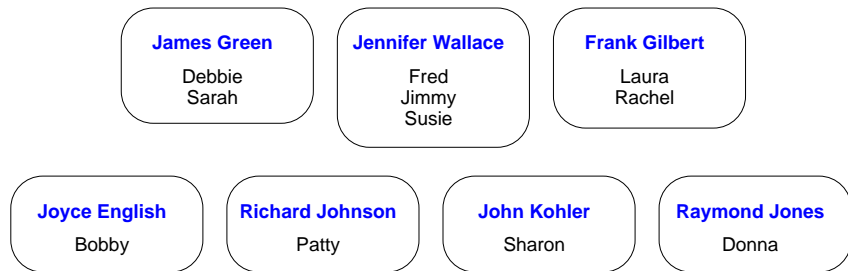
Barbara Brown
Joyce English
Amy Ford

Housewares

Barbara Brown
Richard Johnson

Employees by Project

The company Database



Employees' Dependents

Practice

- 1 For each project, find the average salary of the employees who are working on that project. Display the project name and the average salary.
- 2 For each project, find all the dependents whose parents or guardians are working on that project. Display the project name and the first name of the dependents.
- 3 Find the average salary of those employees who have dependents. (Possible?) Display the average salary.
- 4 Find all employees who are making more than someone else. Display their first and last names.
- 5 Find all employees who are making more than someone else in their own department. Display their first and last names.

More Practice

- 6 For each employee, find the total number of hours that he works. Display the employee's first and last names and his total number of hours.
- 7 Find all males employees who have female dependents. Display the first and last names of the employees.
- 8 For each department, find the average number of dependents of the employees in that department. (Possible?) Display the department name the average number of dependents.
- 9 Find all employees who are making more than someone in a different department. Display their first and last names.
- 10 Find the average age of all employees. Use the `CURRDATE()` and `DATEDIFF()` functions. Display the average age.

More Practice

- 11 Find all employees who have exactly one dependent.
- 12 Find the managers of the three departments. Display the department name and the first and last names of the manager.
- 13 Find the average salary of the department managers.
- 14 For each project, find the age of the oldest person working on that project. Display the project name and the age.
- 15 Find all employees who do not have any dependents. Use the `ISNULL()` function. Display the first and last names of the employees.